

# CLR

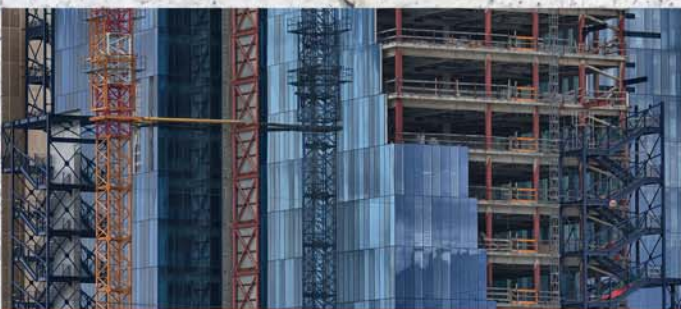
## CLR SCREW ANCHORS



SUSPENDED CEILING APPLICATIONS



INDUSTRIAL SHELVING



FACADE APPLICATIONS



**FRIULSIDER**  
YOUR FIXING FACTORY

## CLR

Screw anchor for structural fixings



Screw anchor for cracked and non-cracked concrete (Option 1)

Fire resistance R120

Hex head with built-in washer and knurling for better fixation and stability of the connection

Cuts on the thread facilitate screwing into the substrate

No plug required

High loading capacity in relation to diameter

High flexibility thanks to 3 anchorage depths

High load values near edges and with reduced spacing distances



Base material:



Product designation	Hole d <sub>0</sub> [mm]	D x L [mm]	Fixing thickness for embedment depth			Wrench SW	Package Separate / Collective [pcs]
			tfix [mm] h <sub>ef</sub> ex. red.	tfix [mm] h <sub>ef</sub> red.	tfix [mm] h <sub>ef</sub> std.		
P72005b100600PL	8	10x60	15	10	-	13	100/600
P72005b100750PL	8	10x75	30	25	10	13	100/500
P72005b101000PL	8	10x100	55	50	35	13	100/400
P72005b101300PL	8	10x130	85	80	65	13	50/300
P72005b101500PL	8	10x150	105	100	85	13	50/300
P72005b120600PL	10	12x60	10	-	-	15	50/300
P72005b120750PL	10	12x75	25	15	-	15	50/300
P72005b121000PL	10	12x100	50	40	25	15	50/200
P72005b121300PL	10	12x130	80	70	55	15	25/150
P72005b121500PL	10	12x150	100	90	75	15	25/150

## CLR INOX A4

Screw anchor for structural fixings



Screw anchor for cracked and non-cracked concrete (Option 1)

Fire resistance R120

The bimetal construction ensures the highest safety - the screw body is made of A4 stainless steel, the cutting part is made of high-hardness steel

Hex head with built-in washer and knurling for better fixation and stability of the connection

No plug required

High load capacity in relation to diameter

High load values near edges and with reduced spacing distances



Base material:



Product designation	Hole d <sub>0</sub> [mm]	Dimension D x L [mm]	Fixing thickness [mm]	Wrench SW	Package Separate / Collective [pcs]
P720100101000PL	8	10x100	15	13	25/150
P720100101100PL	8	10x110	25	13	25/150
P720100101200PL	8	10x120	35	13	25/150
P720100121150PL	10	12x115	15	17	25/150
P720100121250PL	10	12x125	25	17	25/150
P720100121350PL	10	12x135	35	17	25/150

# CLR6

Screw anchor for medium-light fixings



Screw anchor for cracked and non-cracked concrete (Option 1)

Fire resistance R120

High load values near edges and with reduced spacing distances

3 heads for a wide range of applications

The quickest installation of all the CLR range

No plug required

Base material:



\*) not included in ETA



## CLR6 - H

Hex head with built-in washer screw  
white zinc plated

Product designation	Hole d <sub>0</sub> [mm]	Dimension D x L [mm]	Fixing thickness [mm]	Wrench SW	Package Separate / Collective [pcs]
P72009b080600PL	6	7,5x60	5	10	100/1200
P72009b080800PL	6	7,5x80	25	10	100/1200
P72009b081000PL	6	7,5x100	45	10	50/600
P72009b081200PL	6	7,5x120	65	10	50/600



## CLR6 - P

Pan head screw  
white zinc plated  
Torx T30 recess



Product designation	Hole d <sub>0</sub> [mm]	Dimension D x L [mm]	Fixing thickness [mm]	Socket	Package Separate / Collective [pcs]
P72006b080600PL	6	7,5x60	5	TX 30	100
P72006b080750PL	6	7,5x75	20	TX 30	100



## CLR6 - I

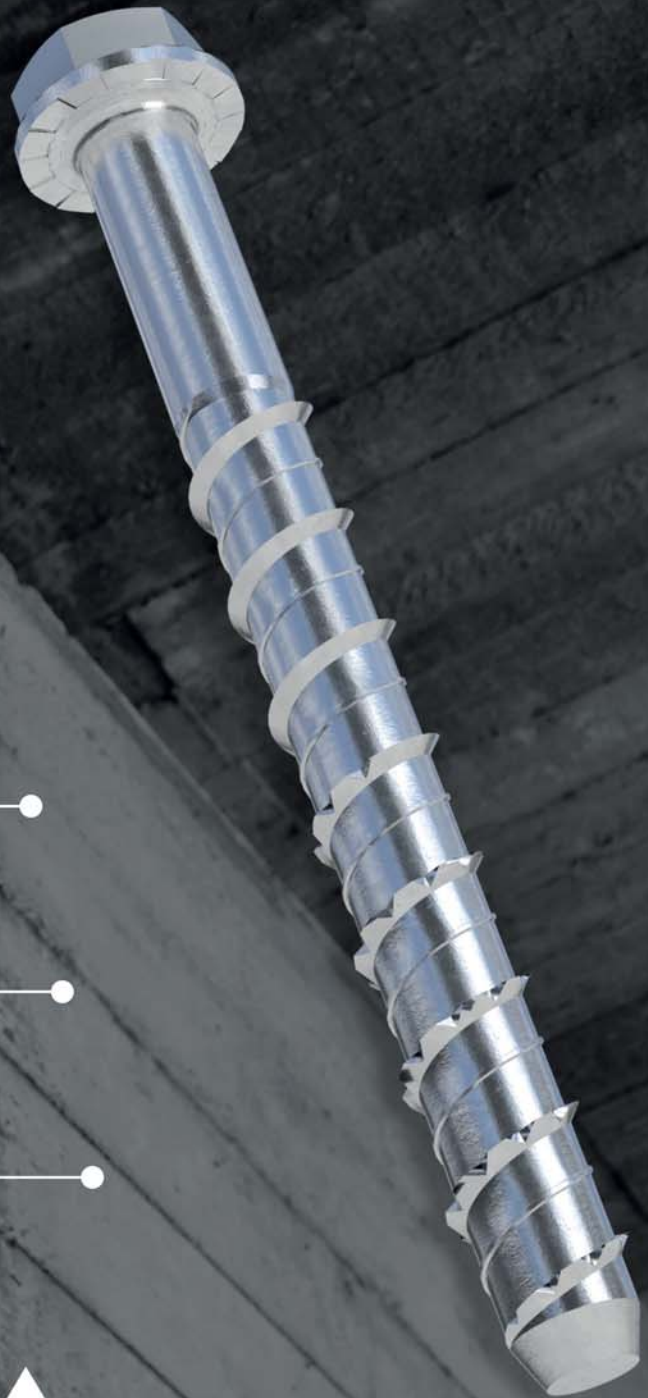
Special head screw assembled with double metric thread hex connecting nut  
white zinc plated

Product designation	Hole d <sub>0</sub> [mm]	Dimension D x L [mm]	Metric thread	Wrench SW	Package Separate / Collective [pcs]
P72008b080550PL	6	7,5x55	M8-M10	13	50/600



# CLR

## SCREW ANCHOR FOR STRUCTURAL FIXINGS



**QUICK INSTALLATION**



**REDUCED EDGE DISTANCE  
AND SPACING DISTANCES**



**3 CERTIFIED EMBEDMENT DEPTHS**



ul. Olsztyńska 30, 11-130 Orneta  
info@etanco.pl | www.etanco.pl