

FM 753

WEDGE ANCHOR FOR UNCRACKED CONCRETE

WIDE RANGE

EASY INSTALLATION

VERSATILE



CABLE TRAYS AND MECHANICAL INSTALLATIONS ON UNCRACKED CONCRETE



RAILINGS INSTALLATION INSIDE THE BUILDING



FM-753

Galvanized wedge anchor for non-cracked concrete

FM-753

Galvanized carbon steel

Wedge anchor for non-cracked concrete (Option 7).

The cold-formed bolt makes the anchor flexible while maintaining high parameters.

Through fastening.

Installation of steel structures, handrails, fixing machines and devices in the non-cracked zone of concrete.

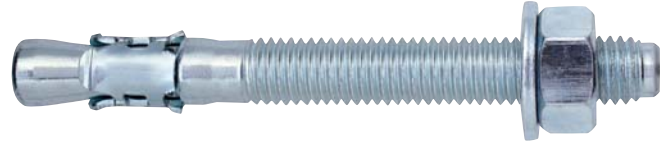
Substrate:



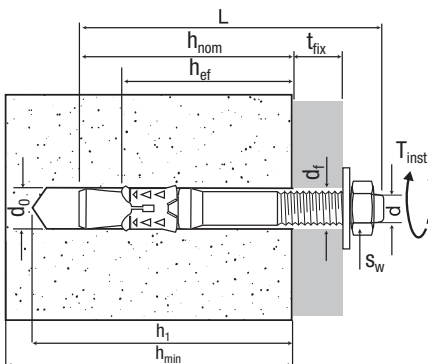
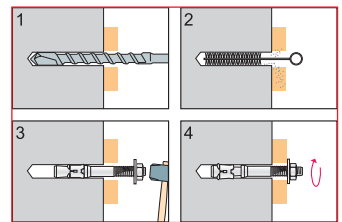
Concrete



Compact stone structure



Product designation	d x L [mm]	Thread length [mm]	d ₀ [mm]	t _{fix} [mm]	d _f [mm]	s _w [mm]	Package Separate/Collective [pcs.]
P75320b060650PL	M6x65	40	6	15	7	11	100/1000
P75320b060850PL	M6x85	60	6	35	7	11	100/1000
P75320b061000PL	M6x100	60	6	50	7	11	50/500
P75320b080750PL	M8x75	48	8	15	9	13	100/400
P75320b080900PL	M8x90	63	8	30	9	13	100/400
P75320b100750PL	M10x75	43	10	5	12	17	50/500
P75320b100900PL	M10x90	55	10	20	12	17	50/200
P75320b101000PL	M10x100	60	10	30	12	17	50/200
P75320b101200PL	M10x120	85	10	50	12	17	50/200
P75320b121000PL	M12x100	58	12	10	14	19	50/200
P75320b121100PL	M12x110	68	12	20	14	19	50/200
P75320b121200PL	M12x120	68	12	30	14	19	25/100
P75320b121350PL	M12x135	93	12	45	14	19	25/100
P75320b121600PL	M12x160	93	12	70	14	19	25/100
P75320b121850PL	M12x185	93	12	100	14	19	25/100
P75320b161250PL	M16x125	68	16	10	18	24	20/80
P75320b161450PL	M16x145	88	16	30	18	24	20/80
P75320b161750PL	M16x175	88	16	60	18	24	20/80
P75320b162150PL	M16x215	88	16	100	18	24	15/60



- d = screw diameter
- d_f = hole diameter of fixing element
- d₀ = hole diameter
- h₁ = minimum hole depth
- h_{ef} = minimum depth of anchorage
- h_{min} = minimum support thickness

- h_{nom} = nominal embedment depth
- L = anchor length
- s_w = wrench
- t_{fix} = fixture thickness
- T_{inst} = torque



FM-753 CRACK INOX A4

Stainless steel A4

Heavy duty stainless steel wedge anchor for cracked and non-cracked concrete (Option 1).

The special design of the clip in combination with A4 stainless steel ensures not only high load capacity but also high corrosion resistance.

Through fastening.

Installation of steel structures, balustrades, handrails, fixing machines and devices in the cracked area of concrete inside and outside.

Seismic loads C1 and C2.

Substrate:



Concrete

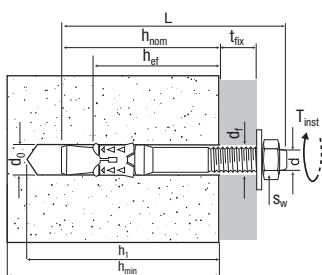
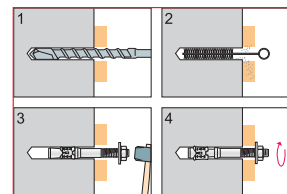


Compact stone structure



Product designation	d x L [mm]	Thread length [mm]	d ₀ [mm]	t _{fix} [mm]	d _f [mm]	s _w [mm]	Package Separate/Collective [pcs.]
P753500080750PL(1)	M8x75	30	8	10	9	13	100/400
P753500080900PL(1)	M8x90	40	8	25	9	13	100/400
P753500081150PL(1)	M8x115	60	8	50	9	13	100/400
P753500100900PL	M10x90	40	10	10	12	17	50/200
P753500101050PL	M10x105	55	10	25	12	17	50/200
P753500101150PL	M10x115	55	10	35	12	17	50/200
P753500121100PL	M12x110	65	12	10	14	19	50/200
P753500121200PL	M12x120	65	12	20	14	19	50/200
P753500121450PL	M12x145	85	12	45	14	19	25/100
P753500161300PL	M16x130	65	16	10	18	24	20/80
P753500161500PL	M16x150	85	16	30	18	24	20/80
P753500161850PL	M16x185	85	16	60	18	24	20/80
P753500162200PL	M16x220	85	16	100	18	24	15/60

⁽¹⁾ Seismic certification category C1 only



- d = screw diameter
- d_f = hole diameter of fixing element
- d₀ = hole diameter
- h₁ = minimum hole depth
- h_{ef} = minimum depth of anchorage
- h_{min} = minimum support thickness

- h_{nom} = nominal embedment depth
- L = anchor length
- s_w = wrench
- t_{fix} = fixture thickness
- T_{inst} = torque

SEISMIC



FIX CALC

ENGINEERING SOFTWARE



SEISMIC

FIXINGS WITH
SEISMIC CERTIFICATION
IN OPTION 1

FM 753 CRACK

WEDGE ANCHOR FOR CRACKED CONCRETE

WITH SEISMIC CERTIFICATION

DYNAMIC AND SEISMIC LOADS

IMMEDIATE EXPANSION

A4 STAINLESS STEEL BOLT AND
EXPANDING CLIP



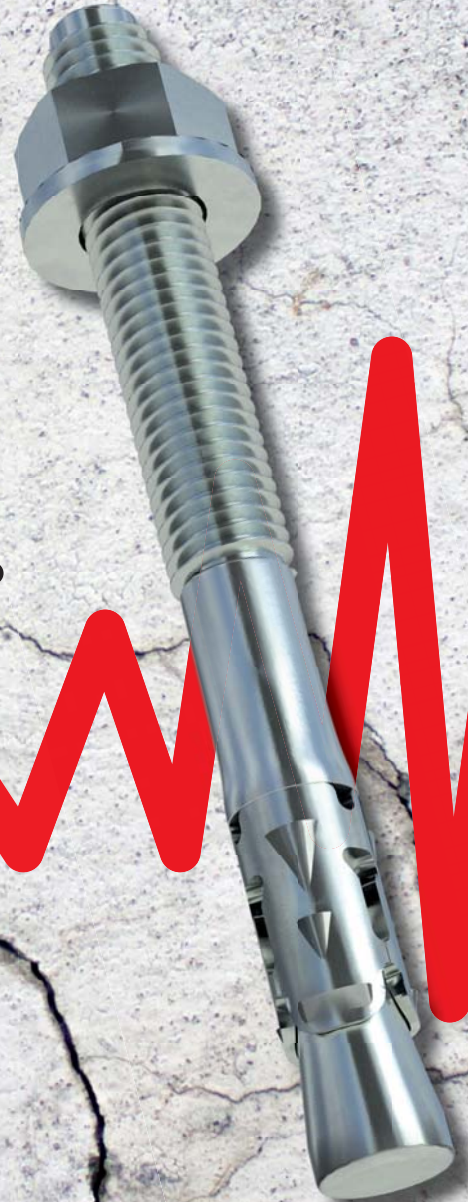
RAILWAY APPLICATIONS



STEEL CONSTRUCTIONS



FACADES



ul. Olsztyńska 30, 11-130 Orneta
info@etanco.pl | www.etanco.pl