



SELF-DRILLING SCREWS FOR SANDWICH PANELS

B-SPS_02/24

Double-thread screws are intended for fastening sandwich panels for steel or concrete structures.

B-PL-2024-2 (1st Edition) © 2024 ETANCO POLAND

SELF-DRILLING SCREWS FOR SANDWICH PANELS

| | |
|------------------------------|---|
| Selection of fasteners | 4 |
| Legend | 5 |

FASTENERS

| | | |
|--------------------------|---|----|
| FASTOP | Galvanized screws with washer | 6 |
| GT 6 SP Z19 | Galvanized screws with washer #6 mm | 7 |
| GTR 6 SP A19 New | gRay.coat screws with washer #6 mm | 8 |
| GT X 6 SP S19 S29 | Stainless screws with washer #6 mm | 9 |
| GT 12 SP Z19 | Galvanized screws with washer #12 mm | 10 |
| GTR 12 SP A19 | gRay.coat screws with washer #12 mm | 11 |
| GT X 12 SP S19 S29 | Stainless screws with washer #12 mm | 12 |
| GTR 16 SP A19 New | Galvanized screws with washer #16 mm | 13 |
| GTR 25 SP A19 New | gRay.coat screws with washer #25 mm | 14 |
| GTR W SP A19 New | gRay.coat screws with washer for concrete | 15 |
| DRILLNOX | Stainless screws with washer # 4-12 mm | 16 |

ACCESSORIES

| | | |
|---------------|---|----|
| SAADLE WASHER | Special aluminum washer | 17 |
| GSPW/GSPW A2 | System washer for sandwich panels | 17 |
| ULTRA | Expansion nylon plug | 18 |
| POINCO | Protective cap for the drilling point | 18 |
| HEAD CAPS | Masking caps | 18 |
| BITS | Screwdrivers bits | 19 |
| DRILL BITS | Drill bits for drilling in concrete | 19 |

Self-drilling and self-tapping screws for fixing sandwich panels with accessories

Double-thread screws are intended for fastening sandwich panels for steel or concrete structures. They have a drilling point from 6 to 25 mm and a thread for steel or a sharp end with a special thread for concrete.

Accessories - saddle washers, longitudinal washers, caps, seals, etc.

LEGEND

| | | | | | |
|--|---|--|---|--|--|
| | Structure material: concrete | | Additional corrosive protection: gRey. coat | | This product requires pre-drilling |
| | Structure material: masonry | | Product made of stainless steel | | Torque |
| | Structure material: Timber | | Made of high-quality nylon (polyamide) | | The recommended screwdriver rpm for screw installation |
| | Structure material: autoclaved concrete | | The product contains UV stabilizers | | Minimum anchoring depth |
| | Structure material: Cold-rolled steel profile | | Bimetal screw (drill point with hardened steel on stainless steel bolt) | | Maximum thickness of fixing elements MTmax |
| | Structure material: hot rolled steel profile | | The thickness of the powder painting coat | | Maximum drilling capacity for two elements |
| | Hex head | | Can be paint with powder paint | | Thickness range of used sandwich panels |
| | Maximum drilling capacity | | | | |
| | Thickness of galvanized coating | | | | |

SELECTION OF FASTENERS

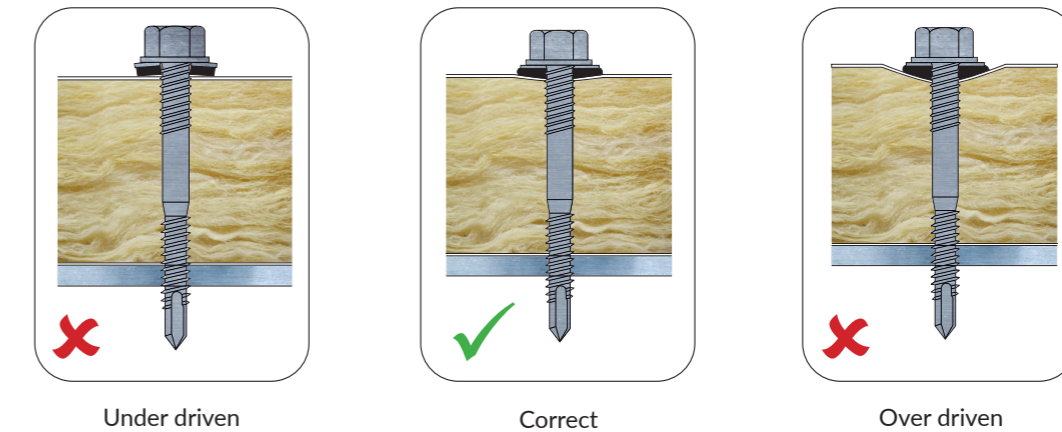
| Application type | Example of fixing | Minimum structure thickness | Maximum structure thickness | Environment corrosion class * | | |
|---|-------------------|-------------------------------------|-----------------------------|-------------------------------|-----------|------------------|
| | | | | T min | T max | C3** |
| fixing of sandwich panels to steel thin-wall structure | | 1,20 mm | 4,00 mm | - | - | DRILLNOX DF 4 |
| | | 1,00 mm | 6,00 mm | GT 6 SP | GTR 6 SP | GTX 6 SP |
| fixing of sandwich panels to hot rolled steel structure | | 3,00 mm | 12,00 mm | GT 12 SP | GTR 12 SP | GTX 12 SP |
| | | | 12,50 mm | - | - | DRILLNOX DF 12,5 |
| | | 4,00 mm | 16,00 mm | - | GTR 16 SP | - |
| | | | 25,00 mm | - | GTR 25 SP | - |
| fixing of sandwich panels to concrete | | 60 mm (H _{ef} 30 or 40 mm) | - | - | GTR W SP | - |
| fixing of sandwich panels to timber | | 30 mm (H _{ef} 30 mm) | - | - | GTR W SP | - |

SELECTION OF FASTENERS

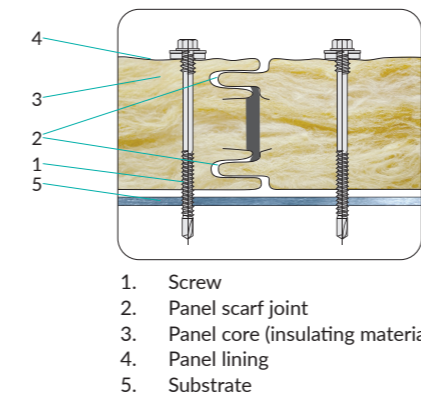
Installation guidelines

- fastener installation should always be perpendicular to the structure,
- fastener installation should be done by using a screwdriver equipped with adjustable clutch or embedding depth stop,
- during installation of the fastener, you should follow all recommended parameters for the type of fastener,
- any modification of fasteners, including cutting, is not allowed,
- in the event of any damage to the anticorrosion coating, defects must be secured (touched up),
- for installation of fasteners coated with paint it is recommended to use only ball-spring sockets.

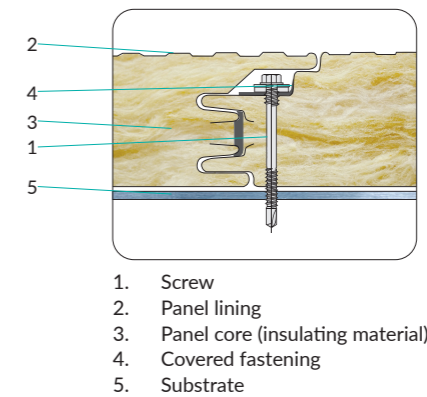
WASHER SETTING RECOMMENDATION (SANDWICH PANEL FIXING)



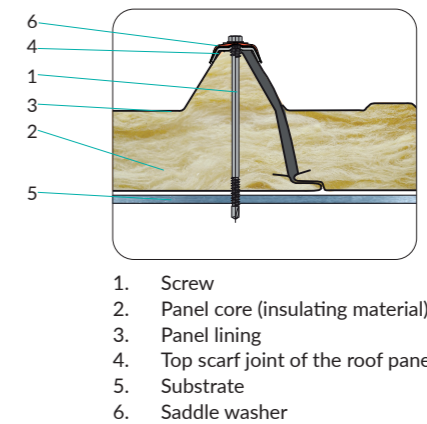
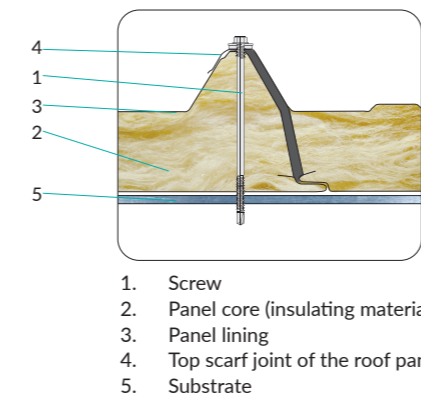
Fixing of a wall sandwich panel



Fixing of a wall sandwich panel with a covered joint



Fixing of a roof sandwich panel

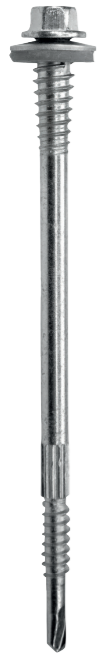


* fixing point location according to the recommendations of the panel manufacturer

FASTOP

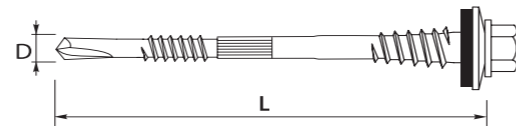
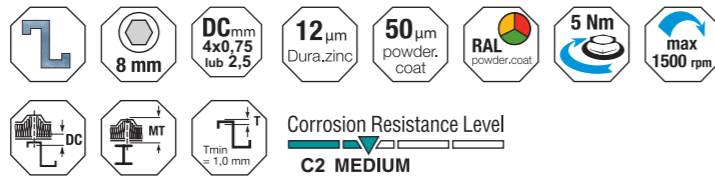
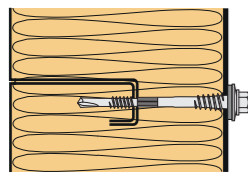
SELF-DRILLING SCREWS WITH A WASHER FOR CLADDING SHEETS IN THE DISTANCE

Self-drilling, self-tapping screws (double thread) made of surface hardened carbon steel, galvanized, drilling point #3, with fine thread and hex head, with a pre-assembled steel washer with vulcanized EPDM layer.



Intended for fixing profiled cladding sheets to wall cassettes with a gap filled with thermal insulation.

| Index | Screw | | | MTmin [mm] | MTmax [mm] | Drilling capacity DC [mm] | Washer | | Packaging Single/ Qty/Collective [pcs] |
|--------|-------|------|------|---------------|---------------|---------------------------------|--------|------|---|
| | D | L | Sw | | | | Mat. | Size | |
| | [mm] | [mm] | [mm] | | | | - | [mm] | |
| 332063 | 5.5 | 70 | 8 | 40 | 40 | 4x0,75 lub 2,5 | A | 16 | 100/1/100 |
| 332064 | 5.5 | 90 | 8 | 60 | 60 | 4x0,75 lub 2,5 | A | 16 | 100/1/100 |
| 332065 | 5.5 | 110 | 8 | 80 | 80 | 4x0,75 lub 2,5 | A | 16 | 100/1/100 |

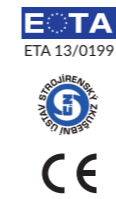


B-PL-2024-1 (1st Edition) © 2024 ETANCO POLAND

GT 6 SP Z19

SELF-DRILLING SCREWS WITH WASHER FOR SANDWICH PANEL FIXING

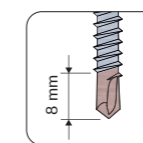
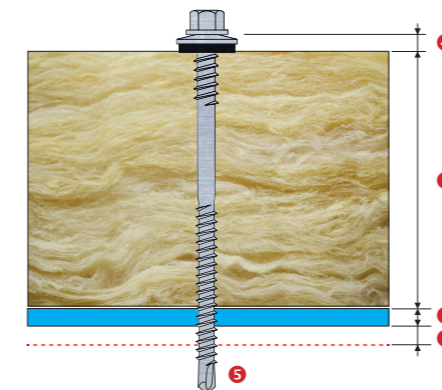
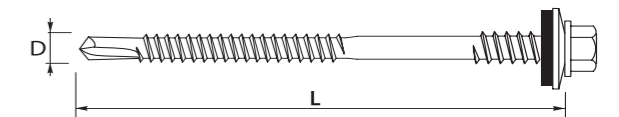
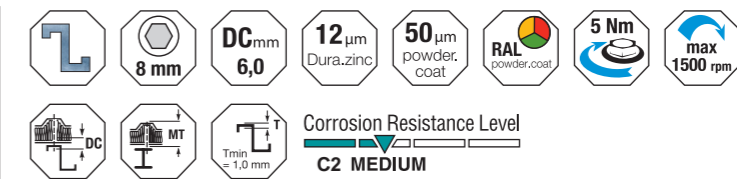
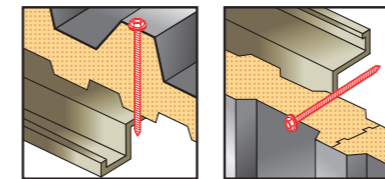
Self-drilling, self-tapping screws (double thread) made of surface hardened carbon steel, galvanized, drilling point #3, with fine thread and hex head, with a pre-assembled steel washer with vulcanized EPDM layer.



Intended for fastening sandwich panels to steel structures.

| Index | Screw | | | MTmin [mm] | MTmax [mm] | Drilling capacity DC [mm] | Washer | | Packaging Single/ Qty/Collective [pcs] |
|-------------|---------|------|------|---------------|---------------|---------------------------------|--------|------|---|
| | D | L | Sw | | | | Mat. | Size | |
| | [mm] | [mm] | [mm] | | | | - | [mm] | |
| P1530650PL | 5,5/6,3 | 65 | 8 | 20 | 40 | 6.00 | Z | 19 | 100/1/100 |
| P1530900PL | 5,5/6,3 | 90 | 8 | 35 | 65 | 6.00 | Z | 19 | 100/1/100 |
| P1531100PL | 5,5/6,3 | 110 | 8 | 55 | 85 | 6.00 | Z | 19 | 100/1/100 |
| P1531250PL | 5,5/6,3 | 125 | 8 | 70 | 100 | 6.00 | Z | 19 | 100/1/100 |
| P1531500PL | 5,5/6,3 | 150 | 8 | 95 | 125 | 6.00 | Z | 19 | 100/1/100 |
| P1531750PL | 5,5/6,3 | 175 | 8 | 120 | 150 | 6.00 | Z | 19 | 100/1/100 |
| P1532000PL | 5,5/6,3 | 200 | 8 | 145 | 175 | 6.00 | Z | 19 | 100/1/100 |
| P1532300PL | 5,5/6,3 | 230 | 8 | 155 | 205 | 6.00 | Z | 19 | 100/1/100 |
| P1532750PL | 5,5/6,3 | 275 | 8 | 200 | 250 | 6.00 | Z | 19 | 100/1/100 |
| P153320R0PL | 5,5/6,3 | 320 | 8 | 245 | 295 | 6.00 | Z | 19 | 100/1/100 |

Thickness of fixed elements MTmax is given for the maximum allowable thickness of the substrate.



GT6 SP

EXAMPLE CHOICE OF FASTENER TO BE USED WITH 100 MM THICK SANDWICH PANELS

1. Mounted element (cladding 100 mm)
2. Thickness of the structural member (steel profile 6 mm)
3. Length of threaded part (3 mm)
4. Washer (4 mm)
5. Drill point (8 mm)

The total length of the working part: 121 mm
GT6 SP Z19 5.5/6.3 x 125 (P1531250PL)

B-PL-2024-1 (1st Edition) © 2024 ETANCO POLAND

GTR 6 SP A19

SELF-DRILLING SCREWS WITH A WASHER FOR SANDWICH PANELS FIXING

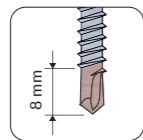
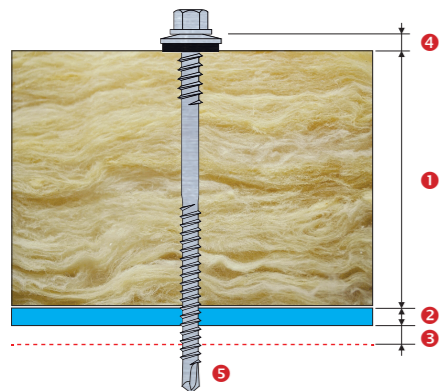
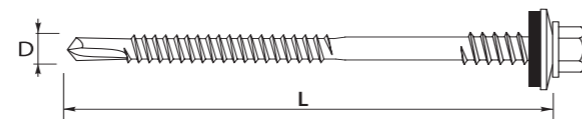
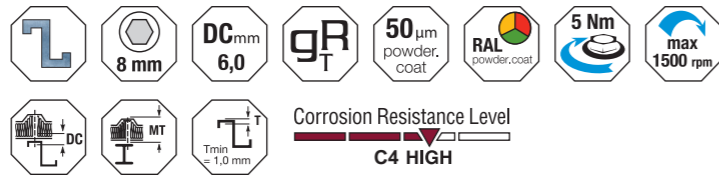
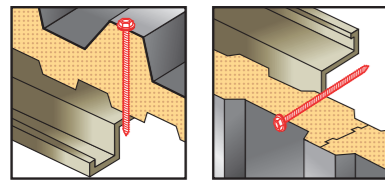
Self-drilling, self-tapping screws (double thread) made of surface-hardened carbon steel, drilling point #3, with fine thread and hex head, with a pre-assembled aluminum washer with vulcanized EPDM. Additional corrosion protection: gRey.coat.



Intended for fastening sandwich panels to steel structures.

| Index | Screw | | | MTmin | MTmax | Drilling capacity | Washer | | Packaging Single/ Qty/Collective [pcs] |
|------------------------|----------------|------------|----------|------------|------------|-------------------|----------|-----------|---|
| | D | L | Sw | | | | Mat. | Size | |
| | [mm] | [mm] | [mm] | | | | - | - | |
| P153065ROPL | 5,5/6,3 | 65 | 8 | 20 | 40 | 6.00 | A | 19 | 100/4/400 |
| P153090ROPL | 5,5/6,3 | 90 | 8 | 35 | 65 | 6.00 | A | 19 | 100/4/400 |
| P153110ROPL | 5,5/6,3 | 110 | 8 | 55 | 85 | 6.00 | A | 19 | 100/1/100 |
| P153125ROPL | 5,5/6,3 | 125 | 8 | 70 | 100 | 6.00 | A | 19 | 100/1/100 |
| New P153135ROPL | 5,5/6,3 | 135 | 8 | 80 | 110 | 6.00 | A | 19 | 100/1/100 |
| P153150ROPL | 5,5/6,3 | 150 | 8 | 95 | 125 | 6.00 | A | 19 | 100/1/100 |
| P153175ROPL | 5,5/6,3 | 175 | 8 | 120 | 150 | 6.00 | A | 19 | 100/1/100 |
| P153200ROPL | 5,5/6,3 | 200 | 8 | 145 | 175 | 6.00 | A | 19 | 100/1/100 |
| P153230ROPL | 5,5/6,3 | 230 | 8 | 155 | 205 | 6.00 | A | 19 | 100/1/100 |
| P153275ROPL | 5,5/6,3 | 275 | 8 | 200 | 250 | 6.00 | A | 19 | 100/1/100 |
| P153320ROPL | 5,5/6,3 | 320 | 8 | 245 | 295 | 6.00 | A | 19 | 100/1/100 |
| New P153350ROPL | 5,5/6,3 | 350 | 8 | 275 | 325 | 6.00 | A | 19 | 100/1/100 |

Thickness of fixed elements MTmax is given for the maximum allowable thickness of the substrate.



GTR6 SP

EXEMPLE CHOICE OF FASTENER TO BE USED WITH 100 MM THICK SANDWICH PANELS

1. Mounted element (cladding 100 mm)
2. Thickness of the structural member (steel profile 6 mm)
3. Length of threaded part (3 mm)
4. Washer (4 mm)
5. Drill point (8 mm)

The total length of the working part: 121 mm

GTR6 SP A19 5.5/6.3 x 125 (P153125ROPL)

GTX 6 SP S19 GTX 6 SP S29

BIMETAL SELF-DRILLING STAINLESS STEEL SCREWS WITH WASHER FOR FIXING SANDWICH PANELS

Self-drilling, self-tapping screws (double thread) made of austenitic stainless steel (BIMETAL), with drilling point #3, fine thread and a hex head, with a pre-assembled stainless steel washer with vulcanized EPDM layer.

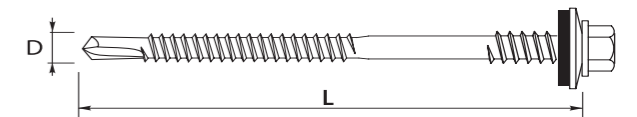
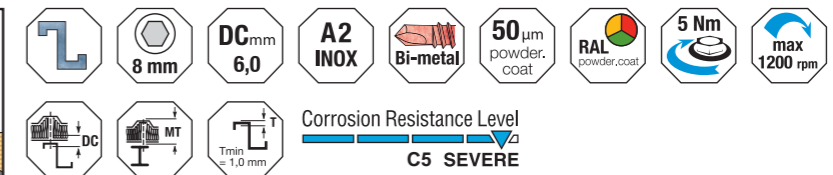
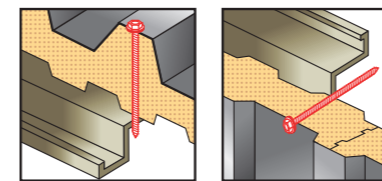


Intended for fastening sandwich panels to steel structures in aggressive environments.

| Index GTX 6 SP S19 | Screw | | | MTmin | MTmax | Drilling capacity | Washer | | Packaging Single/ Qty/Collective [pcs] |
|-----------------------|---------|------|------|-------|-------|-------------------|--------|------|---|
| | D | L | Sw | | | | Mat. | Size | |
| | [mm] | [mm] | [mm] | | | | - | - | |
| P1730850PL | 5,5/6,3 | 85 | 8 | 35 | 65 | 6.00 | S | 19 | 100/4/400 |
| P1731100PL | 5,5/6,3 | 110 | 8 | 60 | 85 | 6.00 | S | 19 | 100/1/100 |
| P1731300PL | 5,5/6,3 | 130 | 8 | 80 | 105 | 6.00 | S | 19 | 100/1/100 |
| P1731500PL | 5,5/6,3 | 150 | 8 | 100 | 125 | 6.00 | S | 19 | 100/1/100 |
| P1731700PL | 5,5/6,3 | 170 | 8 | 120 | 145 | 6.00 | S | 19 | 100/1/100 |
| P1731950PL | 5,5/6,3 | 195 | 8 | 145 | 175 | 6.00 | S | 19 | 100/1/100 |
| P1732250PL | 5,5/6,3 | 225 | 8 | 175 | 200 | 6.00 | S | 19 | 100/1/100 |
| P1732400PL | 5,5/6,3 | 240 | 8 | 190 | 215 | 6.00 | S | 19 | 100/1/100 |
| P1732650PL | 5,5/6,3 | 265 | 8 | 215 | 240 | 6.00 | S | 19 | 100/1/100 |

| Index GTX 6 SP S29 | Screw | | | MTmin | MTmax | Drilling capacity | Washer | | Packaging Single/ Qty/Collective [pcs] |
|-----------------------|---------|------|------|-------|-------|-------------------|--------|------|---|
| | D | L | Sw | | | | Mat. | Size | |
| | [mm] | [mm] | [mm] | | | | - | - | |
| P17308520PL | 5,5/6,3 | 85 | 8 | 35 | 65 | 6.00 | S | 29 | 100/1/100 |
| P17311020PL | 5,5/6,3 | 110 | 8 | 60 | 85 | 6.00 | S | 29 | 100/1/100 |
| P17313020PL | 5,5/6,3 | 130 | 8 | 80 | 105 | 6.00 | S | 29 | 100/1/100 |
| P17315020PL | 5,5/6,3 | 150 | 8 | 100 | 125 | 6.00 | S | 29 | 100/1/100 |
| P17317020PL | 5,5/6,3 | 170 | 8 | 120 | 145 | 6.00 | S | 29 | 100/1/100 |
| P17319520PL | 5,5/6,3 | 195 | 8 | 145 | 175 | 6.00 | S | 29 | 100/1/100 |
| P17322520PL | 5,5/6,3 | 225 | 8 | 175 | 200 | 6.00 | S | 29 | 100/1/100 |
| P17324020PL | 5,5/6,3 | 240 | 8 | 190 | 215 | 6.00 | S | 29 | 100/1/100 |
| P17326520PL | 5,5/6,3 | 265 | 8 | 215 | 240 | 6.00 | S | 29 | 100/1/100 |

Thickness of fixed elements MTmax is given for the maximum allowable thickness of the substrate. In special cases, it is recommended to pre-drill the sandwich panels.



GT 12 SP Z19

SELF-DRILLING SCREWS WITH WASHER FOR SANDWICH PANELS

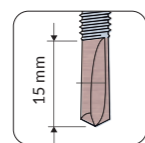
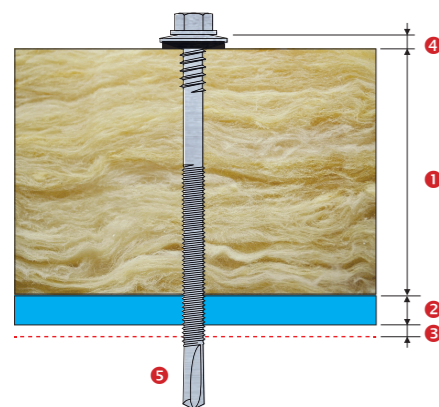
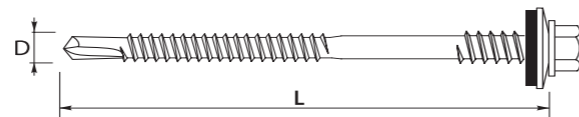
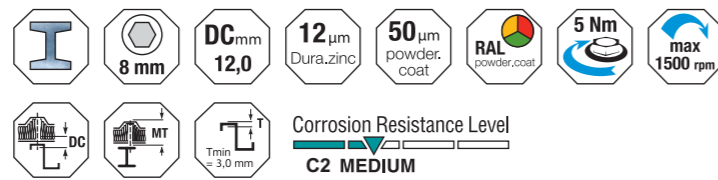
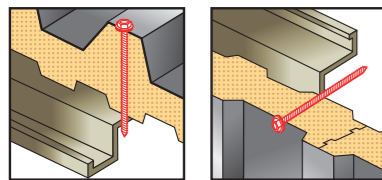
Self-drilling, self-tapping screws (double thread) made of surface-hardened carbon steel, galvanized, drilling point #5, with very fine thread and hex head, with a pre-assembled steel washer with vulcanized EPDM layer.



Intended for fastening sandwich panels to steel structures.

| Index | Screw | | | MTmin | MTmax | Drilling capacity | Washer | | Packaging Single/ Qty/Collective [pcs] |
|------------|---------|------|------|-------|-------|-------------------|--------|------|---|
| | D | L | Sw | | | | Mat. | Size | |
| | [mm] | [mm] | [mm] | | | | | | |
| P1550700PL | 5,5/6,3 | 70 | 8 | 25 | 30 | 12 | Z | 19 | 100/4/400 |
| P1550900PL | 5,5/6,3 | 90 | 8 | 25 | 50 | 12 | Z | 19 | 100/4/400 |
| P1551100PL | 5,5/6,3 | 110 | 8 | 45 | 70 | 12 | Z | 19 | 100/1/100 |
| P1551300PL | 5,5/6,3 | 130 | 8 | 65 | 90 | 12 | Z | 19 | 100/1/100 |
| P1551400PL | 5,5/6,3 | 140 | 8 | 75 | 100 | 12 | Z | 19 | 100/1/100 |
| P1551500PL | 5,5/6,3 | 150 | 8 | 85 | 110 | 12 | Z | 19 | 100/1/100 |
| P1551600PL | 5,5/6,3 | 160 | 8 | 95 | 120 | 12 | Z | 19 | 100/1/100 |
| P1551750PL | 5,5/6,3 | 175 | 8 | 110 | 135 | 12 | Z | 19 | 100/1/100 |
| P1551850PL | 5,5/6,3 | 185 | 8 | 110 | 145 | 12 | Z | 19 | 100/1/100 |
| P1552000PL | 5,5/6,3 | 200 | 8 | 125 | 160 | 12 | Z | 19 | 100/1/100 |
| P1552300PL | 5,5/6,3 | 230 | 8 | 155 | 190 | 12 | Z | 19 | 100/1/100 |
| P1552400PL | 5,5/6,3 | 240 | 8 | 165 | 200 | 12 | Z | 19 | 100/1/100 |
| P1552850PL | 5,5/6,3 | 285 | 8 | 200 | 245 | 12 | Z | 19 | 100/1/100 |

Thickness of fixed elements MTmax is given for the maximum allowable thickness of the substrate.



GT12 SP

EXAMPLE CHOICE OF FASTENER TO BE USED WITH 100 MM THICK SANDWICH PANELS

1. Mounted element (cladding 100 mm)
2. Thickness of the structural member (steel profile 12 mm)
3. Length of threaded part (3 mm)
4. Washer (4 mm)
5. Drill point (15 mm)

The total length of the working part: 134 mm
GT12 SP Z19 5.5/6.3 x 140 (P1551400PL)

GTR 12 SP A19

SELF-DRILLING SCREWS WITH WASHER FOR SANDWICH PANELS

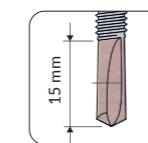
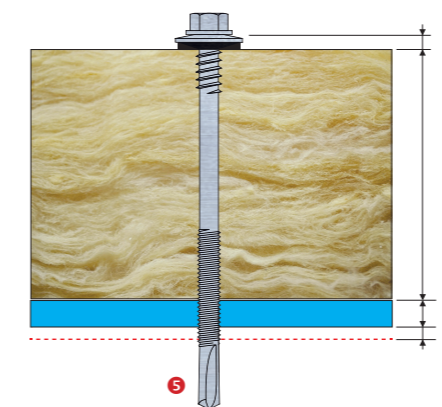
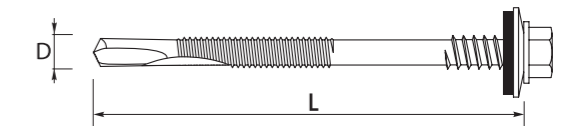
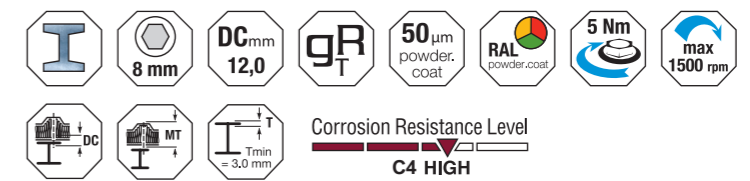
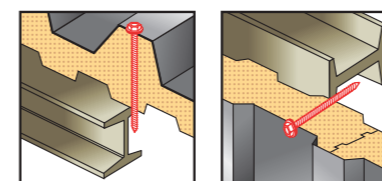
Self-drilling, self-tapping screws (double thread) made of surface-hardened carbon steel, galvanized, drilling point #5, with very fine thread and hex head, with a pre-assembled aluminum washer with vulcanized EPDM layer. Additional corrosion protection: gRey.coat



Intended for fastening sandwich panels to steel structures.

| Index | Screw | | | MTmin | MTmax | Drilling capacity | Washer | | Packaging Single/ Qty/Collective [pcs] |
|-------------|---------|------|------|-------|-------|-------------------|--------|------|---|
| | D | L | Sw | | | | Mat. | Size | |
| | [mm] | [mm] | [mm] | | | | | | |
| P155070ROPL | 5,5/6,3 | 70 | 8 | 25 | 30 | 12.00 | A | 19 | 100/4/400 |
| P155090ROPL | 5,5/6,3 | 90 | 8 | 25 | 50 | 12.00 | A | 19 | 100/4/400 |
| P155110ROPL | 5,5/6,3 | 110 | 8 | 45 | 70 | 12.00 | A | 19 | 100/1/100 |
| P155130ROPL | 5,5/6,3 | 130 | 8 | 65 | 90 | 12.00 | A | 19 | 100/1/100 |
| P155140ROPL | 5,5/6,3 | 140 | 8 | 75 | 100 | 12.00 | A | 19 | 100/1/100 |
| P155150ROPL | 5,5/6,3 | 150 | 8 | 85 | 110 | 12.00 | A | 19 | 100/1/100 |
| P155160ROPL | 5,5/6,3 | 160 | 8 | 95 | 120 | 12.00 | A | 19 | 100/1/100 |
| P155175ROPL | 5,5/6,3 | 175 | 8 | 110 | 135 | 12.00 | A | 19 | 100/1/100 |
| P155185ROPL | 5,5/6,3 | 185 | 8 | 110 | 145 | 12.00 | A | 19 | 100/1/100 |
| P155190ROPL | 5,5/6,3 | 190 | 8 | 115 | 150 | 12.00 | A | 19 | 100/1/100 |
| P155200ROPL | 5,5/6,3 | 200 | 8 | 125 | 160 | 12.00 | A | 19 | 100/1/100 |
| P155230ROPL | 5,5/6,3 | 230 | 8 | 155 | 190 | 12.00 | A | 19 | 100/1/100 |
| P155240ROPL | 5,5/6,3 | 240 | 8 | 165 | 200 | 12.00 | A | 19 | 100/1/100 |
| P155285ROPL | 5,5/6,3 | 285 | 8 | 200 | 245 | 12.00 | A | 19 | 100/1/100 |
| P155330ROPL | 5,5/6,3 | 330 | 8 | 245 | 290 | 12.00 | A | 19 | 100/1/100 |

Thickness of fixed elements MTmax is given for the maximum allowable thickness of the substrate.



GTR12 SP

EXAMPLE CHOICE OF FASTENER TO BE USED WITH 100 MM THICK SANDWICH PANELS

1. Mounted element (cladding 100 mm)
2. Thickness of the structural member (steel profile 12 mm)
3. Length of threaded part (3 mm)
4. Washer (4 mm)
5. Drill point (15 mm)

The total length of the working part: 134 mm
GTR12 SP Z19 5.5/6.3 x 140 (P155140ROPL)

GTX 12 SP S19 GTX 12 SP S29

BIMETAL STAINLESS STEEL
SELFDRILLING SCREWS WITH WASHER
FOR FIXING SANDWICH PANELS

Self-drilling, self-tapping screws (double thread) made of austenitic stainless steel (BIMETAL), with drilling point #5, very fine thread and a hex head, with a pre-assembled stainless steel washer with vulcanized EPDM layer.

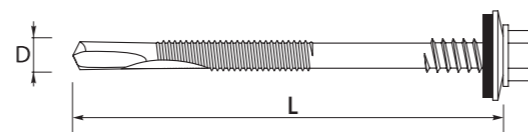
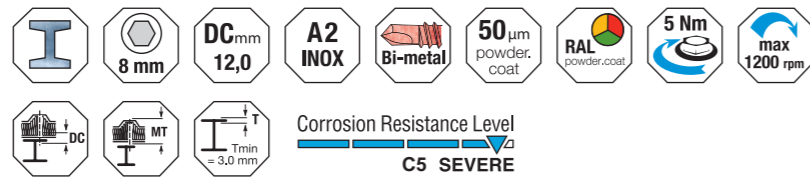
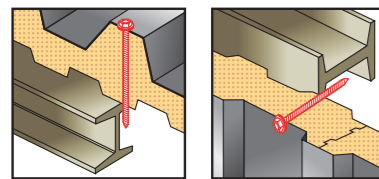


Intended for fastening sandwich panels to steel structures in aggressive environments.

| Index GTX 12 SP S19 | Screw | | | MTmin [mm] | MTmax [mm] | Drilling capacity DC [mm] | Washer | | Packaging Single/ Qty/Collective [pcs] |
|------------------------|---------|------|------|---------------|---------------|------------------------------------|--------|------|---|
| | D | L | Sw | | | | Mat. | Size | |
| | [mm] | [mm] | [mm] | | | | - | [mm] | |
| P1750950PL | 5,5/6,3 | 95 | 8 | 35 | 65 | 12.00 | S | 19 | 100/4/400 |
| P1751250PL | 5,5/6,3 | 125 | 8 | 65 | 90 | 12.00 | S | 19 | 100/1/100 |
| P1751500PL | 5,5/6,3 | 150 | 8 | 90 | 115 | 12.00 | S | 19 | 100/1/100 |
| P1751750PL | 5,5/6,3 | 175 | 8 | 115 | 140 | 12.00 | S | 19 | 100/1/100 |
| P1751850PL | 5,5/6,3 | 185 | 8 | 125 | 150 | 12.00 | S | 19 | 100/1/100 |
| P1752100PL | 5,5/6,3 | 210 | 8 | 150 | 175 | 12.00 | S | 19 | 100/1/100 |
| P1752350PL | 5,5/6,3 | 235 | 8 | 175 | 200 | 12.00 | S | 19 | 100/1/100 |
| P1752500PL | 5,5/6,3 | 250 | 8 | 190 | 215 | 12.00 | S | 19 | 100/1/100 |
| P1752750PL | 5,5/6,3 | 275 | 8 | 215 | 240 | 12.00 | S | 19 | 100/1/100 |

| Index GTX 12 SP S29 | Screw | | | MTmin [mm] | MTmax [mm] | Drilling capacity DC [mm] | Washer | | Packaging Single/ Qty/Collective [pcs] |
|------------------------|---------|------|------|---------------|---------------|------------------------------------|--------|------|---|
| | D | L | Sw | | | | Mat. | Size | |
| | [mm] | [mm] | [mm] | | | | - | [mm] | |
| P17509520PL | 5,5/6,3 | 95 | 8 | 35 | 65 | 12.00 | S | 29 | 100/1/100 |
| P17512520PL | 5,5/6,3 | 125 | 8 | 65 | 90 | 12.00 | S | 29 | 100/1/100 |
| P17515020PL | 5,5/6,3 | 150 | 8 | 90 | 115 | 12.00 | S | 29 | 100/1/100 |
| P17517520PL | 5,5/6,3 | 175 | 8 | 115 | 140 | 12.00 | S | 29 | 100/1/100 |
| P17518520PL | 5,5/6,3 | 185 | 8 | 125 | 150 | 12.00 | S | 29 | 100/1/100 |
| P17521020PL | 5,5/6,3 | 210 | 8 | 150 | 175 | 12.00 | S | 29 | 100/1/100 |
| P17523520PL | 5,5/6,3 | 235 | 8 | 175 | 200 | 12.00 | S | 29 | 100/1/100 |
| P17525020PL | 5,5/6,3 | 250 | 8 | 190 | 215 | 12.00 | S | 29 | 100/1/100 |
| P17527520PL | 5,5/6,3 | 275 | 8 | 215 | 240 | 12.00 | S | 29 | 100/1/100 |

Thickness of fixed elements MTmax is given for the maximum allowable thickness of the substrate. In special cases, it is recommended to pre-drill the sandwich panels.



GTR 16 SP A19

SELF-DRILLING SCREWS FOR
SANDWICH PANELS

Self-drilling, self-tapping screws (double thread) made of surface-hardened carbon steel, drilling point #6, with fine thread and enlarged hex head, with a pre-assembled aluminum washer with vulcanized EPDM. Additional corrosion protection: gRey.coat.

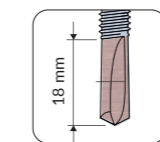
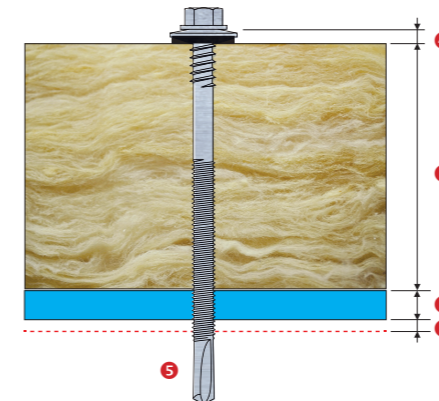
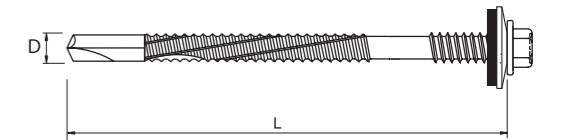
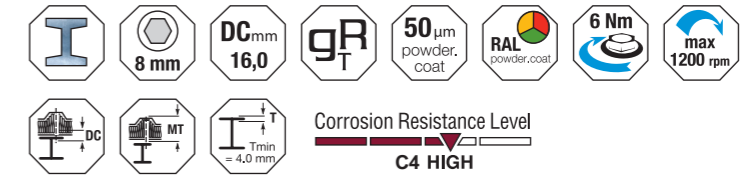
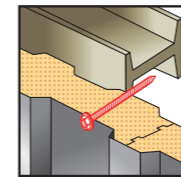
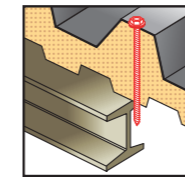


Intended for fastening sandwich panels to thick steel structures. Installation bit included.

| Index | Screw | | | MTmin [mm] | MTmax [mm] | Drilling capacity DC [mm] | Washer | | Packaging Single/ Qty/Collective [pcs] |
|--------------------|----------------|------------|----------|---------------|---------------|------------------------------------|----------|-----------|---|
| | D | L | Sw | | | | Mat. | Size | |
| | [mm] | [mm] | [mm] | | | | - | [mm] | |
| P157085R0PL | 6,3/7,0 | 85 | 8 | 35 | 40 | 16.00 | A | 19 | 100/4/400 |
| P157105R0PL | 6,3/7,0 | 105 | 8 | 55 | 60 | 16.00 | A | 19 | 100/1/100 |
| P157125R0PL | 6,3/7,0 | 125 | 8 | 50 | 80 | 16.00 | A | 19 | 100/1/100 |
| P157135R0PL | 6,3/7,0 | 135 | 8 | 60 | 90 | 16.00 | A | 19 | 100/1/100 |
| P157155R0PL | 6,3/7,0 | 155 | 8 | 65 | 110 | 16.00 | A | 19 | 100/1/100 |
| P157160R0PL | 6,3/7,0 | 160 | 8 | 70 | 115 | 16.00 | A | 19 | 100/1/100 |
| P157180R0PL | 6,3/7,0 | 180 | 8 | 90 | 135 | 16.00 | A | 19 | 100/1/100 |
| P157190R0PL | 6,3/7,0 | 190 | 8 | 100 | 145 | 16.00 | A | 19 | 100/1/100 |
| P157215R0PL | 6,3/7,0 | 215 | 8 | 125 | 170 | 16.00 | A | 19 | 100/1/100 |
| P157250R0PL | 6,3/7,0 | 250 | 8 | 160 | 205 | 16.00 | A | 19 | 100/1/100 |
| P157280R0PL | 6,3/7,0 | 280 | 8 | 190 | 235 | 16.00 | A | 19 | 100/1/100 |
| P157315R0PL | 6,3/7,0 | 315 | 8 | 225 | 270 | 16.00 | A | 19 | 100/1/100 |
| P157350R0PL | 6,3/7,0 | 350 | 8 | 260 | 305 | 16.00 | A | 19 | 100/1/100 |

New

Thickness of fixed elements MTmax is given for the maximum allowable thickness of the substrate.



GTR16 SP

EXAMPLE CHOICE OF FASTENER TO BE USED WITH 100 MM THICK SANDWICH PANELS

1. Mounted element (cladding 100 mm)
2. Thickness of the structural member (steel profile 16 mm)
3. Length of threaded part (3 mm)
4. Washer (4 mm)
5. Drill point (18 mm)

The total length of the working part: 141 mm

GTR16 SP A19 6.3/7.0 x 155 (P157155R0PL)

GTR 25 SPA19

SELF-DRILLING SCREWS FOR SANDWICH PANELS

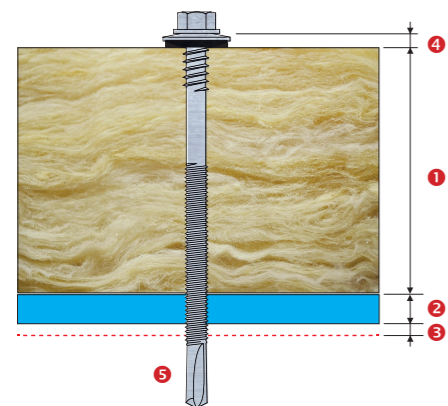
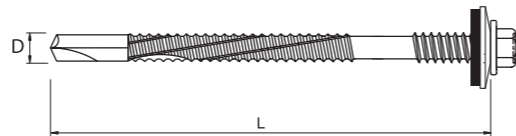
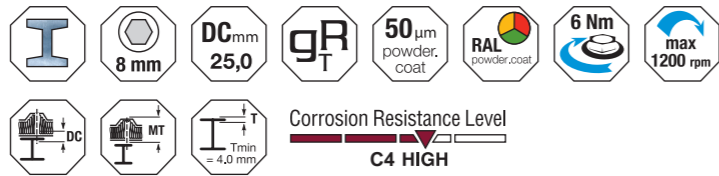
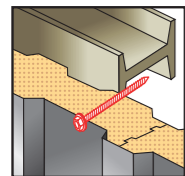
Self-drilling, self-tapping (double-thread) fasteners with a fine thread, made of surface-hardened carbon steel, with drilling point # 8, and an enlarged hexagonal head, with a pre-assembled aluminum washer with vulcanized EPDM. Protected with anti-corrosive gRey.coat



Intended for fastening sandwich panels to steel structures. Intended for use in environment with atmosphere corrosive categories C1, C2, C3, C4 according to PN-EN ISO 12944-2:2001.

| Index | Screw | | | MTmin | MTmax | Drilling capacity DC | Washer | | Packaging Single/ Qty/Collective [pcs] |
|------------------------|----------------|------------|----------|------------|------------|-------------------------|----------|-----------|---|
| | D | L | Sw | | | | Mat. | Size | |
| | [mm] | [mm] | [mm] | | | | - | [mm] | |
| P151160ROPL | 6,3/7,0 | 160 | 8 | 45 | 95 | 25.00 | A | 19 | 100/1/100 |
| New P151180ROPL | 6,3/7,0 | 180 | 8 | 65 | 115 | 25.00 | A | 19 | 100/1/100 |
| P151200ROPL | 6,3/7,0 | 200 | 8 | 85 | 135 | 25.00 | A | 19 | 100/1/100 |
| New P151220ROPL | 6,3/7,0 | 220 | 8 | 105 | 155 | 25.00 | A | 19 | 100/1/100 |
| P151240ROPL | 6,3/7,0 | 240 | 8 | 125 | 175 | 25.00 | A | 19 | 100/1/100 |
| New P151260ROPL | 6,3/7,0 | 260 | 8 | 145 | 195 | 25.00 | A | 19 | 100/1/100 |
| P151280ROPL | 6,3/7,0 | 280 | 8 | 165 | 215 | 25.00 | A | 19 | 100/1/100 |

Thickness of fixed elements MTmax is given for the maximum allowable thickness of the substrate. Due to the high thickness of the substrate and the diversity of materials on the construction site, it is recommended to perform drilling tests each time. Maximum drilling thickness is given for the horizontal position of the screw only.



GTR25 SP

EXAMPLE CHOICE OF FASTENER TO BE USED WITH 100 MM THICK SANDWICH PANELS

1. Mounted element (cladding 100 mm)
2. Thickness of the structural member (steel profile 25 mm)
3. Length of threaded part (3 mm)
4. Washer (4 mm)
5. Drill point (28 mm)

The total length of the working part: 160 mm
GTR16 SPA19 6.3/7.0 x 180 (P151180ROPL)

GTR W SPA19

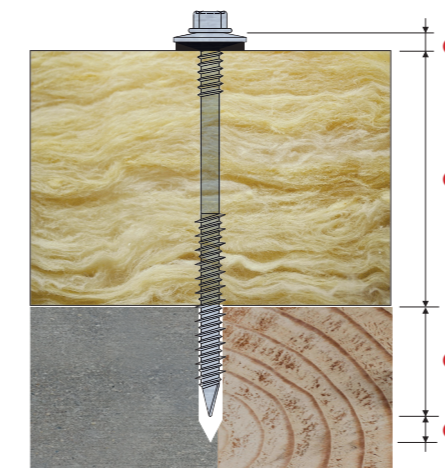
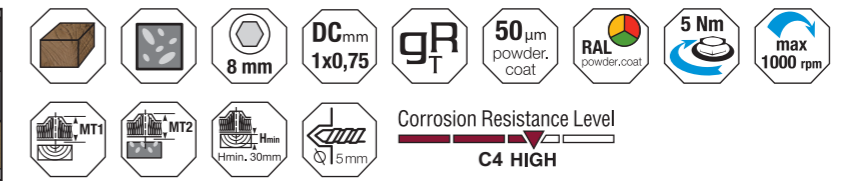
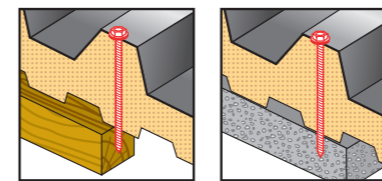
SELF-TAPPING SCREWS WITH WASHER FOR SANDWICH PANELS

Self-tapping screws (double thread) made of surface-hardened carbon steel, with cutting point for timber, hilo thread and hex head with a pre-assembled aluminum washer with vulcanized EPDM washer. Additional corrosion protection: gRey.coat.



Intended for fastening sandwich panels in solid materials such as timber, concrete, aerated concrete, masonry. Direct fastening in concrete and timber. Installation in concrete require Ø 5 mm pre-drilling. Installation in masonry or aerated concrete with expansion sleeve type ULTRA

| Index | Screw | | | Mtnin | hef | hef | Drilling capacity DC | Washer | | Packaging Single/ Qty/Collective [pcs] |
|------------------------|----------------|------------|----------|------------|------------|------------|-------------------------|----------|-----------|---|
| | D | L | Sw | | 30 mm | 40 mm | | Mat. | Size | |
| | [mm] | [mm] | [mm] | | [mm] | [mm] | | - | - | |
| P150100ROPL | 6,4/7,0 | 100 | 8 | 40 | 65 | 55 | 0.75 | A | 19 | 100/1/100 |
| P150120ROPL | 6,4/7,0 | 120 | 8 | 60 | 85 | 75 | 0.75 | A | 19 | 100/1/100 |
| New P150130ROPL | 6,4/7,0 | 130 | 8 | 70 | 95 | 85 | 0.75 | A | 19 | 100/1/100 |
| P150140ROPL | 6,4/7,0 | 140 | 8 | 80 | 105 | 95 | 0.75 | A | 19 | 100/1/100 |
| New P150150ROPL | 6,4/7,0 | 150 | 8 | 90 | 115 | 105 | 0.75 | A | 19 | 100/1/100 |
| P150160ROPL | 6,4/7,0 | 160 | 8 | 100 | 125 | 115 | 0.75 | A | 19 | 100/1/100 |
| New P150170ROPL | 6,4/7,0 | 170 | 8 | 110 | 135 | 125 | 0.75 | A | 19 | 100/1/100 |
| P150190ROPL | 6,4/7,0 | 190 | 8 | 130 | 155 | 145 | 0.75 | A | 19 | 100/1/100 |
| P150210ROPL | 6,4/7,0 | 210 | 8 | 150 | 175 | 165 | 0.75 | A | 19 | 100/1/100 |
| New P150230ROPL | 6,4/7,0 | 230 | 8 | 170 | 195 | 185 | 0.75 | A | 19 | 100/1/100 |
| P150240ROPL | 6,4/7,0 | 240 | 8 | 180 | 205 | 195 | 0.75 | A | 19 | 100/1/100 |
| New P150250ROPL | 6,4/7,0 | 250 | 8 | 190 | 215 | 205 | 0.75 | A | 19 | 100/1/100 |
| P150260ROPL | 6,4/7,0 | 260 | 8 | 200 | 225 | 215 | 0.75 | A | 19 | 100/1/100 |
| P150280ROPL | 6,4/7,0 | 280 | 8 | 220 | 245 | 235 | 0.75 | A | 19 | 100/1/100 |
| P150310ROPL | 6,4/7,0 | 310 | 8 | 250 | 275 | 265 | 0.75 | A | 19 | 100/1/100 |
| New P150350ROPL | 6,4/7,0 | 350 | 8 | 290 | 315 | 305 | 0.75 | A | 19 | 100/1/100 |



GTRW SP

EXAMPLE CHOICE OF FASTENER TO BE USED WITH 100 MM THICK SANDWICH PANELS

1. Mounted element (cladding 100 mm)
2. Structural element (concrete or wood)
3. Minimum fastening depth in concrete or wood (30 mm)
4. Minimum depth of the hole is equal to the depth of anchorage plus 10mm of free space
5. Washer (4 mm)

The total length of the working part: 134 mm
GTR W SPA19 6.3/7.0 x 140

DRILLNOX

BIMETAL STAINLESS SCREW WITH A WASHER FOR FIXING SANDWICH PANELS

Self-drilling, self-tapping (double thread) fasteners made of austenitic steel (BIMETAL), with drilling point # 3, fine working thread and a hexagonal head, with a pre-assembled stainless washer with vulcanized EPDM.



Intended for fastening sandwich panels to steel structures in aggressive environments.

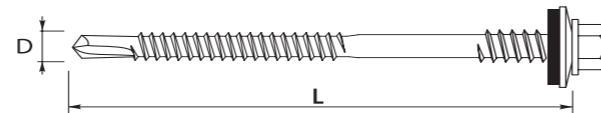
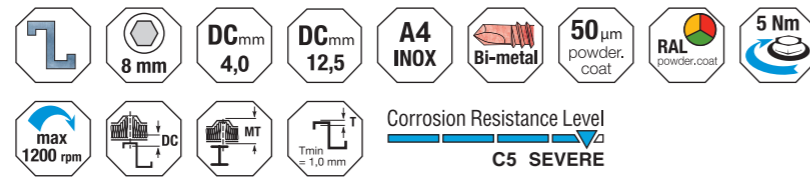
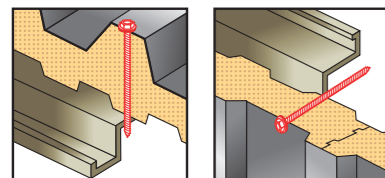
DRILLNOX DF4

| Index | Screw | | | MTmin | MTmax | Drilling capacity | Washer | | Packaging Single/ Qty/Collective [pcs] |
|---------|---------|------|------|-------|-------|-------------------|--------|------|---|
| | D | L | Sw | | | | Mat. | Size | |
| | [mm] | [mm] | [mm] | | | | - | [mm] | |
| P374506 | 5,5/6,3 | 70 | 8 | 25 | 49 | 4 | S | 19 | 100/1/100 |
| P374508 | 5,5/6,3 | 85 | 8 | 40 | 64 | 4 | S | 19 | 100/1/100 |
| P374511 | 5,5/6,3 | 110 | 8 | 65 | 89 | 4 | S | 19 | 100/1/100 |
| P374525 | 5,5/6,3 | 125 | 8 | 50 | 104 | 4 | S | 19 | 100/1/100 |
| P374527 | 5,5/6,3 | 145 | 8 | 70 | 124 | 4 | S | 19 | 100/1/100 |
| P374529 | 5,5/6,3 | 175 | 8 | 100 | 154 | 4 | S | 19 | 100/1/100 |
| P374661 | 5,5/6,3 | 195 | 8 | 120 | 174 | 4 | S | 19 | 100/1/100 |
| P374666 | 5,5/6,3 | 215 | 8 | 140 | 194 | 4 | S | 19 | 100/1/100 |
| P374671 | 5,5/6,3 | 235 | 8 | 160 | 214 | 4 | S | 19 | 100/1/100 |
| P374686 | 5,5/6,3 | 295 | 8 | 220 | 274 | 4 | S | 19 | 100/1/100 |

DRILLNOX DF12,5

| Index | Screw | | | MTmin | MTmax | Drilling capacity | Washer | | Packaging Single/ Qty/Collective [pcs] |
|---------|---------|------|------|-------|-------|-------------------|--------|------|---|
| | D | L | Sw | | | | Mat. | Size | |
| | [mm] | [mm] | [mm] | | | | - | [mm] | |
| P374531 | 5,5/6,3 | 80 | 8 | 23 | 47 | 12,5 | S | 19 | 100/1/100 |
| P374533 | 5,5/6,3 | 95 | 8 | 38 | 62 | 12,5 | S | 19 | 100/1/100 |
| P374535 | 5,5/6,3 | 115 | 8 | 58 | 82 | 12,5 | S | 19 | 100/1/100 |
| P374537 | 5,5/6,3 | 135 | 8 | 78 | 102 | 12,5 | S | 19 | 100/1/100 |
| P374539 | 5,5/6,3 | 155 | 8 | 98 | 122 | 12,5 | S | 19 | 100/1/100 |
| P374541 | 5,5/6,3 | 190 | 8 | 113 | 157 | 12,5 | S | 19 | 100/1/100 |
| P374731 | 5,5/6,3 | 200 | 8 | 123 | 167 | 12,5 | S | 19 | 100/1/100 |
| P374736 | 5,5/6,3 | 220 | 8 | 143 | 187 | 12,5 | S | 19 | 100/1/100 |
| P374741 | 5,5/6,3 | 240 | 8 | 163 | 207 | 12,5 | S | 19 | 100/1/100 |
| P374746 | 5,5/6,3 | 260 | 8 | 183 | 227 | 12,5 | S | 19 | 100/1/100 |
| P374751 | 5,5/6,3 | 280 | 8 | 203 | 247 | 12,5 | S | 19 | 100/1/100 |
| P374756 | 5,5/6,3 | 300 | 8 | 223 | 267 | 12,5 | S | 19 | 100/1/100 |

Thickness of fixed elements MTmax is given for the maximum allowable thickness of the substrate.



SADDLE WASHER

SPECIAL ALUMINIUM WASHERS FOR SANDWICH PANELS FIXING

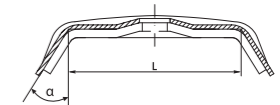
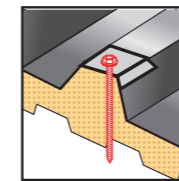
Saddle washers made of high quality aluminum with vulcanized EPDM layer.



Intended for fastening roof sandwich panels by using of GTR SP screws. Saddle washers increase the loading capacity of the connection thanks to larger contact surface area with the surface of sandwich panel. While vulcanized EPDM material provides excellent sealing properties and excellent flexibility.

| Index | Kaloty | | | Packaging Single/Qty/Collective [pcs] |
|----------|--------|--------|-------------------|---|
| | Width | Lenght | Inclination angle | |
| | L | D | α | |
| PKAL2627 | 26 | 40 | 31 | 100/1/100 |
| PKAL3225 | 30 | 40 | 23 | 100/1/100 |
| PKAL4132 | 40 | 40 | 38 | 100/1/100 |

* available in RAL colors



GSPW / GSPW A2

SYSTEM WASHER FOR SANDWICH PANELS

System washer for sandwich panels with a hidden fastening, made of carbon steel, galvanized (GSPW) or A2 stainless steel (GSPW A2).



Intended for use with sandwich panels with hidden fastening in combination:

- GSPW – screws GT and GTR
- GSPW A2- screws GTX

The shape is suitable to typical locks of sandwich panels. High corrosion resistance thanks to the use of A2 stainless steel

| Index | Washer | | | Steel | Coating | Packaging Single/ Qty/Collective [pcs] |
|--------------|-------------------|--------|-----------------|--------------------|------------|---|
| | Minimum thickness | Lenght | Number of holes | | | |
| | D | L | N | | | |
| PGSPW8030 | 1,2 | 80 | 2 | carbon steel | galvanized | 25/1/25 |
| PGSPW10025 | 1,2 | 100 | 3 | carbon steel | galvanized | 25/1/25 |
| PGSPW15025 | 1,2 | 150 | 4 | carbon steel | galvanized | 25/1/25 |
| PGSPW15030 | 1,2 | 150 | 4 | carbon steel | galvanized | 25/1/25 |
| PGSPW8030A2 | 1,2 | 80 | 4 | A2 stainless steel | - | 25/1/25 |
| PGSPW10025A2 | 1,2 | 100 | 4 | A2 stainless steel | - | 25/1/25 |
| PGSPW15025A2 | 1,2 | 150 | 4 | A2 stainless steel | - | 25/1/25 |
| PGSPW15030A2 | 1,2 | 150 | 4 | A2 stainless steel | - | 25/1/25 |

ULTRA

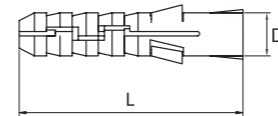
EXPANSION NYLON PLUG

Expansion plug made of high-quality nylon.



Intended for fastening sandwich panels in soft solid materials such as aerated concrete, or masonry in combination with GTR W SP screws.

| Index | Nylon plug | | Packaging Single/Qty/Collective [pcs] |
|----------|------------|-----------|--|
| | Lenght | Width | |
| | L [mm] | D [mm] | |
| PUP00792 | 50 | 10 | 50/1/50 |



PROTECTIVE CAP POINCO

Protective cap for the drilling point made of white soft PVC plastic



Intended to secure the ends of screws Ø4,8 – Ø6,3 protruding from the structure after installation

- high aesthetics
- safety for people
- reducing the screw's contact with the environment

| Index | Protective cap | | | | Packaging Single/Qty/Collective [pcs] |
|---------|------------------|-----------|----------------|-------|--|
| | Outside diameter | Lenght | Screw diameter | Color | |
| | Ø [mm] | L [mm] | D [mm] | | |
| P402103 | 7 | 25 | 4,8/5,5 | white | 100/1/100 |
| P402102 | 9 | 35 | 6,3 | white | 100/1/100 |

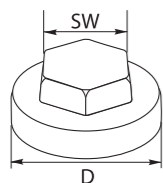
COLOR HEAD CAPS

Masking caps made of a modified polyethylene containing UV stabilizers. The caps are available in different RAL colors



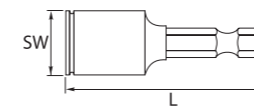
Intended for plugging on the heads of the screws to visually unify the color of screws to the color of the facade or roof of the building.

| Index | Color cap | | | Packaging Single/Qty/Collective [pcs] |
|---------|-----------|------|-------|--|
| | SW | D | Color | |
| | [mm] | [mm] | RAL | |
| P000011 | 8 | 19 | 1002 | 1000/1/1000 |
| P000021 | 8 | 19 | 1015 | 1000/1/1000 |
| P000081 | 8 | 19 | 9006 | 1000/1/1000 |
| P000131 | 8 | 19 | 3016 | 1000/1/1000 |
| P000171 | 8 | 19 | 9002 | 1000/1/1000 |
| P000091 | 8 | 19 | 9010 | 1000/1/1000 |
| P000243 | 8 | 19 | 7024 | 1000/1/1000 |



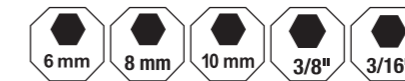
HEX SOCKETS

Screwdrivers bits are made of high quality chrome vanadium steel, surface hardened, protected from corrosion. Hexagonal shape, different sizes screw holding systems (magnetic with an internal or external spring).



Intended for use in screwdrivers. Used for correct screwing hex head fasteners into the structure material. For GTX screws as well as painted screws it is recommended to use the bits with spring.

| Index | Bit | | TYPE | Packaging Single/Qty/Collective [pcs] |
|---------|------|------|---|--|
| | SW | L | | |
| | [mm] | [mm] | | |
| P181031 | 6 | 45 | magnetic | 1/1/1 |
| P189903 | 6 | 45 | spring, dedicated bit for GTS-STAR screws | 1/1/1 |
| P189899 | 8 | 45 | magnetic | 1/1/1 |
| P189898 | 8 | 45 | spring | 1/1/1 |
| P189900 | 8 | 65 | magnetic | 1/1/1 |
| P181033 | 3/8" | - | magnetic | 1/1/1 |
| Z541851 | - | - | dedicated holder for PAN HEAD screws | 1/1/1 |
| P189901 | 10 | 65 | magnetic | 1/1/1 |

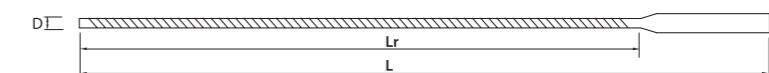


CONCRETE DRILL BITS

Drill bits for drilling in concrete



| Index | SDS+ Drill bit | | | | Packaging Single/Qty/Collective [pcs] |
|--------------|----------------|------|------|----------------|--|
| | L | Lr | D | Connection End | |
| | [mm] | [mm] | [mm] | Typ | |
| PSDS550110 | 110 | 50 | 5 | SDS+ | 1/1/1 |
| PSDS5100160 | 160 | 100 | 5 | SDS+ | 1/1/1 |
| PSDS5150210 | 210 | 150 | 5 | SDS+ | 1/1/1 |
| PSDS5200260 | 260 | 200 | 5 | SDS+ | 1/1/1 |
| PSDS5250310 | 310 | 250 | 5 | SDS+ | 1/1/1 |
| PSDS5300360 | 360 | 300 | 5 | SDS+ | 1/1/1 |
| PSDS5350410 | 410 | 350 | 5 | SDS+ | 1/1/1 |
| PSDS5550110 | 110 | 50 | 5,5 | SDS+ | 1/1/1 |
| PSDS55100160 | 160 | 100 | 5,5 | SDS+ | 1/1/1 |
| PSDS55150210 | 210 | 150 | 5,5 | SDS+ | 1/1/1 |
| PSDS55200260 | 260 | 200 | 5,5 | SDS+ | 1/1/1 |
| PSDS55250310 | 310 | 250 | 5,5 | SDS+ | 1/1/1 |
| PSDS55300360 | 360 | 300 | 5,5 | SDS+ | 1/1/1 |
| PSDS55350410 | 410 | 350 | 5,5 | SDS+ | 1/1/1 |



CUSTOMER SERVICE OFFICE
ul. Olsztyńska 30
11-130 Orneta

Tel.: +48 55 24 22 926
+48 55 24 22 936
Faks: +48 55 24 22 956

info@Etanco.pl
www.Etanco.pl

PRODUCT DEVELOPMENT AND MARKETING

ul. Karczkowska 42
02-871 Warszawa

Tel. +48 22 50 65 202

