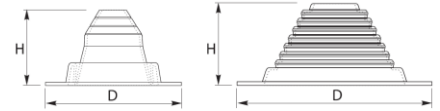


## GMF

### SEALING COLLARS

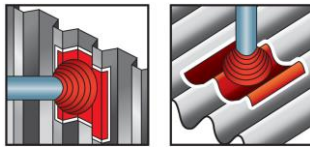


#### PRODUCT DESCRIPTION

Collars with a square base, of various sizes, made of EPDM reinforced with aluminum tape.

#### APPLICATION

Designed for sealing the penetration holes of circular cross-section of different types of building installation (chimneys, ventilation, water pipes and sewer, cables, etc.) in the façades and roofs made of corrugated sheets. Mounting of collars takes place by means of self-tapping screws and sealing silicone. The hole diameter should be about 20% smaller than of the sealed element.



#### DIMENSIONS (According to NATIONAL TECHNICAL ASSESSMENT ITB-KOT-2018/0680)

Type	Dimensions		Diameter of the sealing element	
	Height [mm]	Base width [mm]	Min [mm]	Max [mm]
GMF 1	55	114	6	50
GMF 2	75	155	32	76
GMF 3	83	205	60	102
GMF 4	102	255	76	152
GMF 5	115	275	102	178
GMF 6	128	305	127	228
GMF 7	132	365	152	280
GMF 8	140	425	178	330

