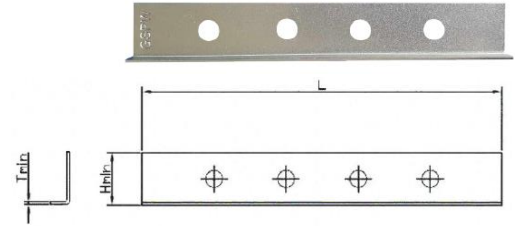


GSPW

GSPW SANDWICH PANELS WASHER

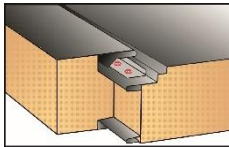


PRODUCT DESCRIPTION

System washer for sandwich panels with a hidden lock, made of electro-galvanized carbon steel.

APPLICATION

Designed for use in the lock of the sandwich panels with a hidden lock in combination with fasteners GT, GTR i GTX SP



WASHER DIMENSIONS

Mark	Dimensions			
	Minimum thickness Tmin [mm]	Length L [mm]	Width Hmin [mm]	Number of holes
PGSPW8030	1,2	80	22	2
PGSPW10025	1,2	100	22	3
PGSPW15025	1,2	150	22	4
PGSPW15030	1,2	150	22	4

TECHNICAL APPROVAL ETA 13/0199

Mark	Characteristic load capacity
	To drag connectors through washers GSPW
PGSPW8030	4,45 kN
PGSPW8030	4,45 kN
PGSPW15025	4,45 kN
PGSPW15030	4,45 kN

OTHER FEATURES

BASE MATERIAL: *CARBON STEEL*

METAL HOLE DIAMETER: *7,3 mm*

MINIMUM THICKNESS OF METAL: *1,2 mm*

NUMBER OF HOLES: *2, 3, 4*

THICKNESS OF ZINC COATED: *14 μm*



ETA



DWU/DoP